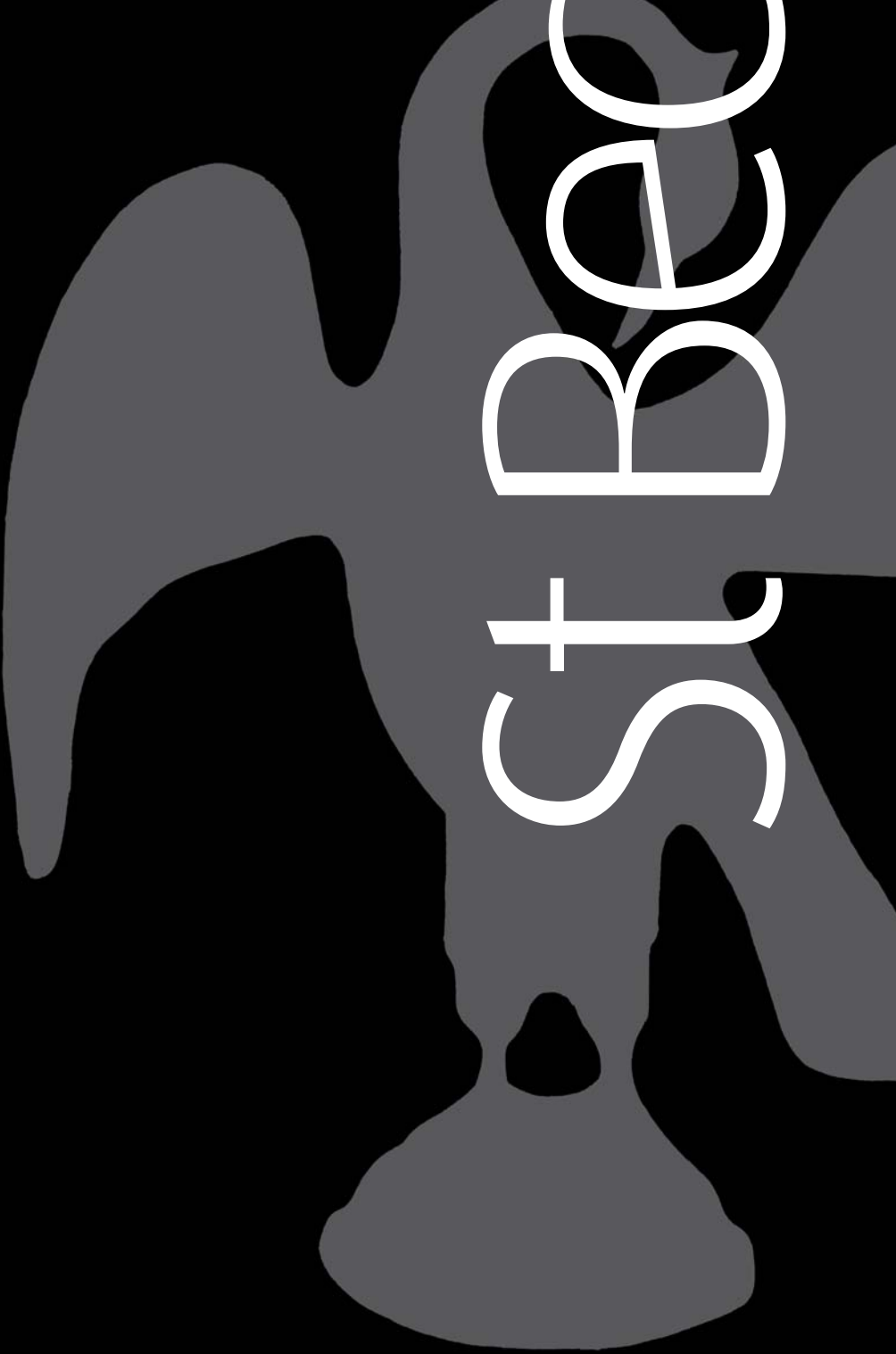


Sixth Form Prospectus

St Bede's



Why choose St Bede's?

The Sixth Form should be the crowning glory of your school years. You sit at the top of the School as young adults, studying the subjects you chose to do, leading the student community and preparing yourselves for life beyond school.

In my view, it is our role to help you succeed academically whilst giving you the best possible memories of school. So why is St Bede's sixth form so special? I think for three main reasons:

Firstly, the breadth and range of courses. Few schools try so hard to cater for the interests and aptitudes of their students. We have over fifty programmes available and a range of qualifications that best fit your needs. The vast majority are A level

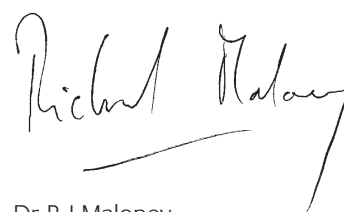
exams which are challenging qualifications, however, if you want a different academic challenge, the Pre-U exam might just be the thing for you. Those of you who are vocationally minded might find the BTEC and NVQ courses really interesting and exciting. You can specialise at St Bede's whilst being supported to be as good as you can be.

Secondly, St Bede's is about so much more than just exam results. Although we will do everything we can to get you the best grades in the most stimulating way possible, our school exists to educate other aspects of life as well. Our sporting, musical, dramatic and artistic provision is second to none. I believe that school should provide you with the chance to become involved in as many areas as you can and our co-curricular programme provides so many wonderful possibilities.

Thirdly, we will prepare you best for the next phase of your lives. If you are to have that

stretching target to aim for, that ambition to achieve, you need guidance from teachers who give you the self-belief to aim high. The university world is getting ever more competitive and we will invest considerable time and energy supporting you through the application process.

St Bede's has a wonderful atmosphere and gives students an experience that few other schools and colleges can match. The warmth of St Bede's, the quality of relationships between teachers and students and the commitment to providing you with opportunities to excel inside and outside of the classroom is unparalleled.



Dr R J Maloney
Headmaster



Life in the Sixth Form

The Sixth Form at St Bede's represents the vital bridge between school and the excitement and challenges of the outside world. Both inside and outside the classroom our Sixth Form experience seeks to provide the opportunities for personal growth and leadership whilst maintaining the supportive atmosphere the school has always been famous for.

Sixth Form students enjoy a rich social life within the school environment and the greatest asset of the social life is undoubtedly the diversity of the student body. From Hastings to Hamburg, Brighton to Beijing the Sixth Form is a melting pot of individuals from across the globe.

At the heart of school life is the 'House System'. Whether a day student or a boarder, the House is the focus for one's social and pastoral life. Each of the houses has regular events and trips that are organised throughout the school year; the bonds and spirit which are built up through the House system also provide extraordinary opportunities for leadership. Working closely with staff and younger members of the school community is valuable preparation for the negotiations of adulthood.

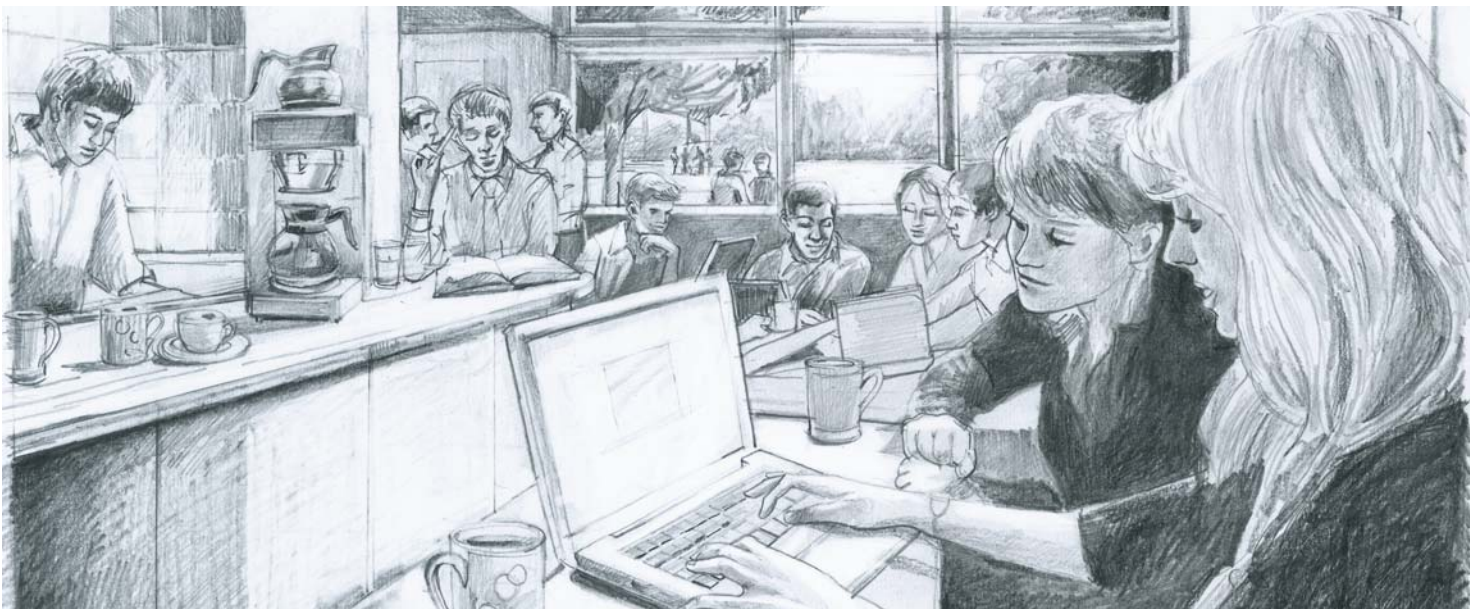


These skills are further nurtured through our deeply embedded Tutor programme. Every sixth former has their own Tutor who guides them through the assault course of university applications and career choices available. Equally each receives training and guidance in those areas of life which schools and colleges too often ignore: how to manage one's finances, the challenges of adulthood, the law and how to make the most of opportunities.

New developments for September 2011 seek to further enhance the Sixth Form experience for St Bede's students. A Sixth Form centre, situated on the site of the old Stud House, will provide opportunities for Sixth Formers to manage their own time,

both academically and socially. The planned Café will provide a zone where Sixth Formers can meet and relax and represents a distinct departure from life in the junior part of the school. The workrooms, careers office, gym and village shop equally allow students to increasingly manage their time in a way that best suits their own learning and social needs. Above all else St Bede's offers a sixth from environment that delivers the strong social experience that prepares our students for life at university.

Ed Dickie
Senior Day Housemaster



Artist impression of Sixth Form Café

Academic Life in the Sixth Form

The Sixth Form is where study gets serious. Compared to the GCSE years, the amount of time that is spent on each course doubles, and the number of courses halves – meaning that the focus is very much on subjects that you enjoy, and that you want to be pursuing. And the range of courses available is greater than at GCSE: there are more subjects, and there are more ways in which to study those subjects too.

Accounting, Economics, Film Studies, Government and Politics, History of Art, Media Studies and Psychology – all are subjects that students will not have encountered before. In addition, those who wish to pursue their study of Drama must choose between Performing Arts (a practical course) and Theatre Studies (which is more concerned with the academic aspect of drama), while students who are interested in ICT have a choice of Computer Science (which looks at how computers work) and ICT (which is more interested in what computers do). In addition, the more expected A levels, from Physics to History, from Geography to German, are in there as well. A levels will suit most students very well indeed, with their combination of exams and coursework, and a chance to take modules in the Lower Sixth year and then retake them if necessary in the Upper Sixth.

Some students may prefer to combine their A levels with one or two Pre-U courses. We currently offer these in English Literature and Politics: there are no exams until the end of the second year, and that extra space enables students to grow and develop before they are plunged into the maelstrom of assessment. The work is, possibly, a little harder than in a conventional A level, and it is possible to receive grades which are equivalent to something higher than an A Level A*.



For some students, neither A levels nor the Pre-U will be appropriate – or at least, not exclusively. Such students may instead prefer to opt for a BTEC course. The BTEC is a vocational course, the equivalent to either one or two A levels (and recognised as such by universities). Assessment is continuous, and coursework-based. A variety of options exist: in Sport, Music Technology, and Music Performance, and, from September 2011, in Business, and in Animal Management. The

Business course is the latest of a number of vocational business courses in which St Bede's students have excelled over the years, while Animal Management represents a new venture for us. Operating out of its own bespoke centre, the course will deal with the care of animals both domestic and exotic, and will include work undertaken on local farms and in nearby zoos – as well as with the School's own expanding animal collection. It will be an ideal qualification for



those who may want to go on to work with animals, or in the worlds of conservation or, possibly, tourism – just as each of these BTEC courses offers students the opportunity to acquire practical expertise in an area in which they may want to go on and work after they have completed their education.

With such a variety of subjects and courses, it is vital that students select programmes which best suit their own interests, their own working styles, their own abilities – and their own career aspirations. The courses that are chosen now really will shape a student's life, so the selection needs to be made carefully and thoughtfully, drawing on the advice of teachers, tutors, parents – and students who have studied the courses which you might be contemplating. If I want to study Economics at university, do I need to have Maths A level? If I want to study Sports Science, is Biology A level essential? And must I do Art if I want to be an architect? (The answers, incidentally, are usually, usually, and more often than not).

Studying in the Sixth Form is different. You will have more academic freedom, and the chance to really explore subjects which, until now, you have probably only glimpsed into. You will have free time within your



school day, and you will need that time - the need to work independently is far greater when you are in the Sixth Form, as are the chances to go beyond the confines of the curriculum. And performing at the highest possible level really does matter. University places are fought over like never before, and, with the rising cost of university education, the need to make it to the best possible establishment, and to do the course which is absolutely in tune with your requirements, has never been more pronounced. That process starts as you begin to consider the subjects, and the courses, which are right for you.

Handwritten signature of John Tuson.

John Tuson
Deputy Head Academic

Co-Curricular in the Sixth Form

Our belief at St Bede's is that students learn not only in the classroom but from every aspect of school life. We are very proud to offer our students a rich and diverse programme of co-curricular activities which enables those with a variety of talents and interests to find something they wish to pursue and which caters for both the hobbyist and the elite.

Students in the Sixth Form take part in four co-curricular activities every week with one day a week being dedicated to private study. Our aim is to help all students have a positive and enjoyable experience in their activities and we try, as far as we can, to allow them to have a flexible approach to their activity choices.

For those who have a special talent they wish to develop, we will support them by providing coaching and training in their chosen field. For hobbyists there is an array of activities ranging from Bird Watching to American Politics; Car Restoration to Computer Animation and Grub on a Grant to Oxbridge Preparation courses, to name just a few activities on offer.

We also recognise that our primary goal should be providing our young people with the skills for life beyond St Bede's and that a key area for development for any student should be that of leadership and service to the wider community. Our aim for 2011 is to develop our activity programme further by including an activity for each student in the Sixth Form in which they learn to develop their leadership skills, put these skills into

practice and provide some form of service to the School or the wider community. We are keen for senior students to lead activities for our younger students and believe very much in the philosophy that our young people learn best from 'doing' - that their activities should allow them to transfer skills to their future lives. Tutors will spend time discussing with students their choices and ensuring that they maximise their potential skills and talents whilst at the same time having a balanced, individual and challenging activity programme.

We are justifiably proud of our activities programme at St Bede's and believe that it offers Sixth Form students a unique opportunity to become well rounded individuals who learn from all aspects of school life.



Rachael Woollett
Deputy Head Co-Curricular



Life after St Bede's

St Bede's is ambitious for its students and we make a firm commitment to helping them move beyond the cosy confines of The Dicker and progress with confidence towards their career goals and that all important first step of university.

In addition to a comprehensive careers service for all, that begins in Year 10 and tracks students throughout the senior years, each student can receive bespoke guidance from Mr Williams, our Higher Education Co-ordinator.

At the beginning of the Lower Sixth the value of work experience will have been highlighted – universities look very favourably on work or work experience that has come about as a result of a student's own initiative.



Towards the end of the Lower Sixth considerable focus is given to 'moving on.' Teachers and tutors discuss potential Higher Education courses with students; a visit to a Higher Education Convention is arranged and students are encouraged to attend open days at the universities they are considering applying to. On site workshops delivered by industry insiders and St Bede's alumni, give the students insights into writing the perfect personal statement and refining their body language and interview technique.

Applying for Higher Education can be a daunting process and in the early part of the autumn term of the Upper Sixth students are supported in completing their UCAS (university application) form.

St Bede's Art Department successfully prepares a significant number of students for Art College entry each year. Numbers vary but have averaged 15 applicants per Upper Sixth cohort over the last 15 years. Many of these students progress on to the one year foundation diploma course which is the ideal preparation for a vocationally

focused degree course. Some students will progress directly onto degree courses such as Graphic Design, Illustration, Animation or Fine Art.

Similarly a number of students each year are assisted in moving on to the top Music, Drama and Dance colleges in the country.

The range and breadth of courses on offer to students at St Bede's in the Sixth Form is mirrored in the range and breadth of the courses they move onto at Higher Education.

A snapshot of 2010 leavers includes Psychology at Sussex, Biology at Imperial, History at Leeds, Politics at Leeds, Architecture at Cardiff, Law at Warwick, Mathematics at Warwick, English at Leeds and Product Design at Loughborough.

Alumni include a successful West End director, actors, musicians, lawyers, doctors, pilots, product designers, business managers, scientists and professional sportsmen and women, to mention just a few, and our alumni association keeps everyone in touch once they have left St Bede's.



St Bede's School, Upper Dicker
Hailsham, E.Sussex, BN27 3QH
United Kingdom

Telephone:
+44 (0)1323 843252

Facsimile:
+44 (0)1323 442628

